

Logix  
community  
★stars

2020



*at a glance*

# What a year!

At the beginning of 2020, I challenged our amazing Community Stars Foundation to raise \$202,000 for our non-profit partners. At the time, I had no idea that we were about to embark on the most challenging year in the foundation's history.

When the pandemic hit and unemployment rose to the highest levels since the Great Depression, the team was undeterred in their efforts to meet this goal. Fortunately, Logix Federal Credit Union remained an essential business. However, some employees were impacted by family members being furloughed or laid off, making it more difficult to maintain contribution levels from the prior year. The foundation team's drive and ingenuity helped them navigate through this and many other obstacles, remarkably raising over \$230,000, almost 30% more than the prior year.



As a result, each of our four nonprofit partners received \$57,000. In a year as difficult as 2020, these donations made a huge difference in the lives of so many at Burbank Temporary Aid Center, Circle of Hope, For The Troops and Penny Lane Centers.

Our employees' payroll contributions accounted for more than \$140,000. When Community Stars hosted a toy drive for the kids at Penny Lane Centers, our employees once again stepped up and donated more than \$3,600 to make sure they each received holiday cheer. Logix employees reached out to some of the credit union's well-established vendors, who contributed more than

\$11,000 to our efforts. Other fundraising efforts throughout the year contributed nearly \$38,000, and Logix delivered more than \$34,000 in matching donations to the foundation.

One incredible employee who deserves recognition is Burbank's own Della Guadiana, whose creativity and industriousness in the face of the pandemic produced hand-made face masks, which were made available for a donation to Community Stars.

I'm very proud of the work the Community Stars Foundation continues to do to support our non-profit partners. I'd like to thank each person who continues to contribute to Community Stars. Together, we're making a big difference in our community!

Sincerely,

A handwritten signature in black ink that reads "Ana E. Insean".

President & CEO  
Logix Federal Credit Union



a message from logix



### Burbank Temporary Aid Center

BTAC is a community service designed to provide short-term help for people in need of emergency assistance with food, shelter, and the necessities of life that cannot be met by other established agencies.

Since 1974, this organization has served as a lifeline to residents on the brink of experiencing homelessness.

[www.burbanktemporaryaidcenter.org](http://www.burbanktemporaryaidcenter.org)



CIRCLE OF HOPE

### Circle of Hope

Circle of Hope provides education and support services for uninsured and underinsured individuals with breast, cervical, ovarian, prostate, testicular, uterine or colon cancer.

This Santa Clarita-based nonprofit improves patients and families' lives by providing education and support services today, so they have a brighter future tomorrow.

[www.circleofhopeinc.org](http://www.circleofhopeinc.org)



### For The Troops

For The Troops sends care packages to U.S. front-line troops and those stationed around the world. The organization's mission is to deliver a piece of home to soldiers overseas.

These packages contain such things as snack items, DVDs, CDs, batteries, personal care items and notes from family and friends.

[www.forthetroops.org](http://www.forthetroops.org)



### Penny Lane Centers

Penny Lane Centers fosters hopes and dreams by empowering youth and families to reach their highest potential.

The organization's services include residential treatment, foster care, adoption services, transitional housing for emancipated foster youth and more.

[www.pennylane.org](http://www.pennylane.org)

our charity partners





\*Not pictured: Christa Israel, Simin Yamotahari and Christi Roelle-Simmonds

Logix Community Stars Foundation was started in an effort to directly impact the areas served by the credit union. We support four worthy nonprofit organizations, each of which receives 25 percent of the dollars brought in by

staff, fundraisers and the credit union each year. Our Board of Directors provides invaluable time, effort and oversight to ensure the Community Stars Foundation runs smoothly and continues to make an impact.

Throughout the year 2020, among the things that Logix Community Stars missed most was Volunteer Time Off.

Logix Federal Credit Union gives employees paid time off to volunteer in the community. Through this Volunteer Time Off Program, employees can participate in an organized event or group activity that supports the community or one of our charity partners.



Prior to the pandemic, Logix employees enjoyed volunteering for many of our community partners, including James Storehouse in Newbury Park, For The Troops in Simi Valley,

We look forward to healthier times, when we can volunteer our time and effort once again.

our board of directors

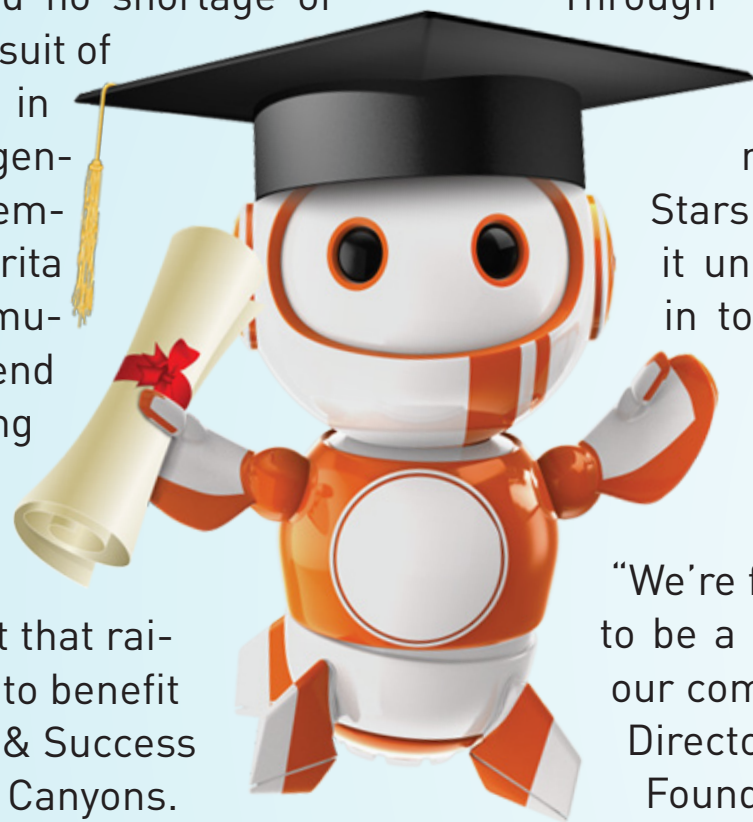
time off from volunteer time off



College students faced no shortage of challenges in their pursuit of continuing education in 2020. Thanks to the generosity of Logix, its members and Santa Clarita Valley residents, Community Stars was able to lend some of them a helping hand.

In November, Logix offered a matching gift that raised more than \$7,500 to benefit the Student Resource & Success Fund at College of the Canyons.

Donors were able to contribute online or by stopping by a branch to pick up a collectible Robix graduate lapel pin with a suggested minimum donation.



Through its Double Your Dollars campaign, Logix matched dollar-for-dollar each donation received by Community Stars. In addition, many of the credit union's valued vendors stepped in to contribute to the cause, including C. Myers, Payden & Rygel, Strum, and ACS – Air Conditioning Solutions.

“We’re fortunate that Logix continues to be a partner to the college and to our community,” said James Kneblak, Director of Development for the COC Foundation. “To have sponsors who truly care about giving back helps the college ensure the success of our students. This gift comes at the end of an extraordinarily difficult year, when students need all the assistance we can provide.”

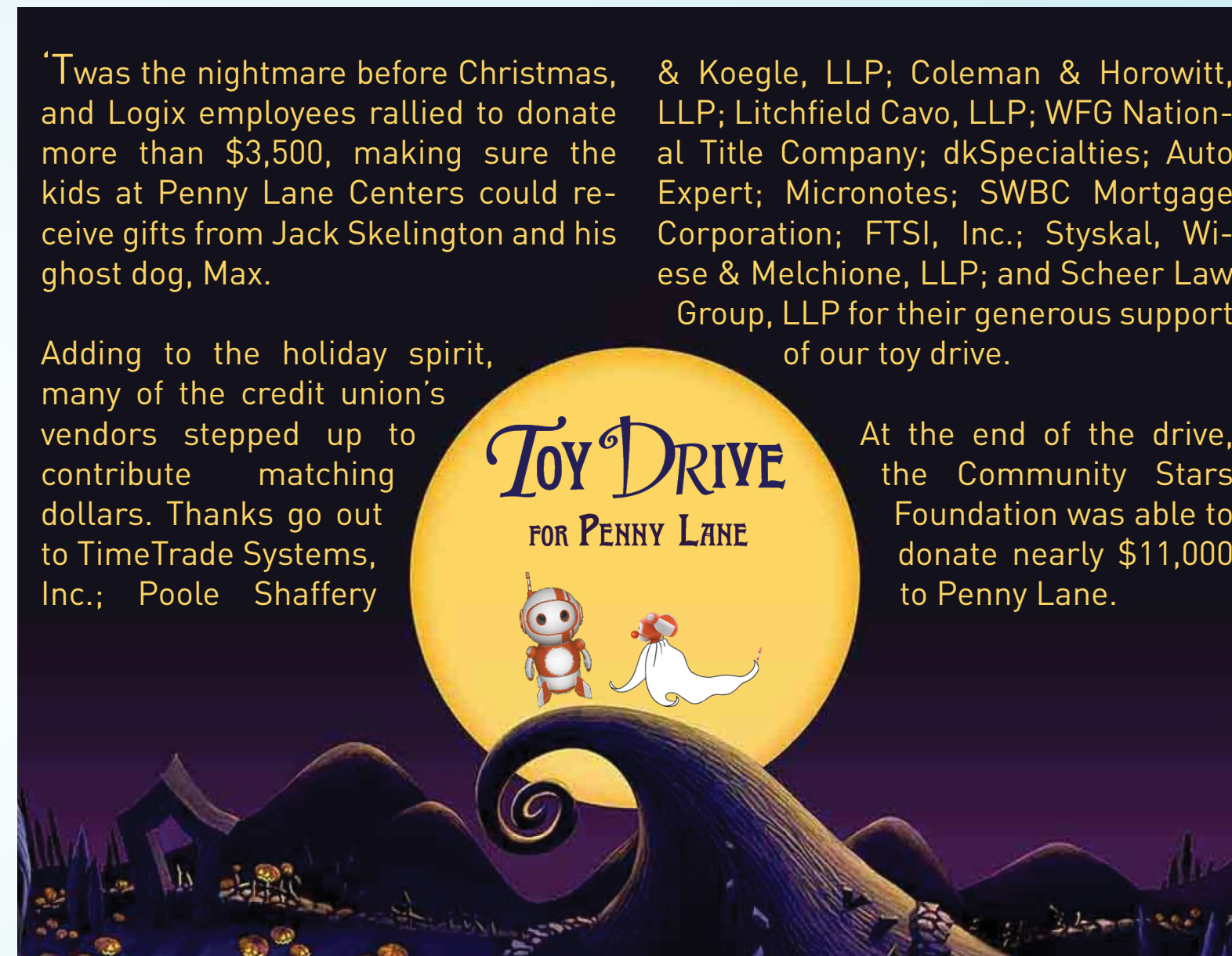
an education in giving

‘Twas the nightmare before Christmas, and Logix employees rallied to donate more than \$3,500, making sure the kids at Penny Lane Centers could receive gifts from Jack Skelington and his ghost dog, Max.

Adding to the holiday spirit, many of the credit union's vendors stepped up to contribute matching dollars. Thanks go out to TimeTrade Systems, Inc.; Poole Shaffery

& Koegle, LLP; Coleman & Horowitz, LLP; Litchfield Cavo, LLP; WFG National Title Company; dkSpecialties; Auto Expert; Micronotes; SWBC Mortgage Corporation; FTSI, Inc.; Styskal, Wise & Melchione, LLP; and Scheer Law Group, LLP for their generous support of our toy drive.

At the end of the drive, the Community Stars Foundation was able to donate nearly \$11,000 to Penny Lane.



penny lane centers toy drive



# Many thanks ...



To our vendors, for generously supporting our fundraisers in 2020:

- TimeTrade Systems, Inc.
- Poole Shaffery & Koegle, LLP
- Coleman & Horowitz, LLP
- Litchfield Cavo, LLP
- WFG National Title Company
- dkSpecialties
- Auto Expert
- Micronotes
- SWBC Mortgage Corporation
- FTSI, Inc.
- Styskal, Wiese & Melchione, LLP
- Scheer Law Group, LLP
- C. Myers
- Payden & Rygel
- Strum
- ACS Air Conditioning Solutions



The pandemic was no match for the kindness and creativity of Burbank Branch Service Manager Della Guadiana, who transformed a Logix-branded sock into a face mask. Before long, the demand for Robix and Max masks (Say that three times fast!) was widespread. Logix produced and ordered 2,500 branded masks, available for a minimum donation.



Della continued her grassroots mask-making and offered handmade face masks with proceeds all going to Community Stars.

Community Stars received more than \$18,000 from face mask donations, with nearly 20% coming from Della's handmade masks.

with gratitude

putting the 'fun' in fundraiser

Since its creation, [Logix Community Stars](#) has raised:

\$ 1,550,162

a new milestone

\$146,305

TOTAL EMPLOYEE  
CONTRIBUTIONS  
VIA PAYROLL



AVERAGE PAYROLL  
DEDUCTION  
PER EMPLOYEE

\$9.88



TOTAL REVENUE  
FROM FUNDRAISERS

\$37,495



2021 YEARLY TOTAL

\$230,574



70.9%  
PERCENTAGE OF  
EMPLOYEES  
CONTRIBUTING

# OF EMPLOYEES  
CONTRIBUTING

540



\$34,112

MATCHING  
DONATIONS FROM  
LOGIX



a record-breaking year



# Remembering Michel

It is with a heavy heart that we dedicate the 2020 At A Glance to Michel Hui, who passed away in December. She was a valued staff member in the Research and Innovation group; she was also our coworker, our friend and a champion of Logix Community Stars Foundation.



Michel served on the foundation's Board of Directors from 2016-2017, and the Advisory Board from 2018-2020. She participated in the Community Stars' Week committee annually, and frequently volunteered. She had a huge collection of Robix and Max pins, which she proudly wore on her lanyard.

When we hosted fundraisers, Michel would encourage employees to give more, saying that she knew you wanted to increase your contribution. "You know you

want to give more," she would say with a smile. She also helped us crunch numbers, calculating how many contributors we had, and helped us set goals with these figures.

Michel was an ambassador for the credit union, even outside of our doors. She would talk about how proud she was to work for the credit union, the benefits of being a member and how involved Logix is in the community. Her energy was positively amazing. During Kindness Week, she created signs to post around the building – words of encouragement. She was dedicated to making a difference.

In the coming months, employees will be dedicating a space at the new headquarters to keep Michel's memory alive.



in memoriam



Thanks to our employee volunteers, for their contributions to our 2020 review:

- Stacey Klein - Design/Writing
- Alethia Calagias - Editing
- Sierra Wilson - Editing
- Nick Mitchell - Editing
- Ren Quinine - Financials
- Joe Bealer - Financials
- Tyler Templeton - Compliance
- Chris McClafferty-Helley - Compliance

CONTACT ADDRESS

2340 N. Hollywood Way  
Burbank, California  
91505, USA  
[www.custars.org](http://www.custars.org)

*\*Logix Community Stars is a nonprofit charitable foundation operated by Logix Federal Credit Union employee volunteers. Logix Federal Credit Union is not affiliated with the charitable organizations supported by Logix Community Stars.*